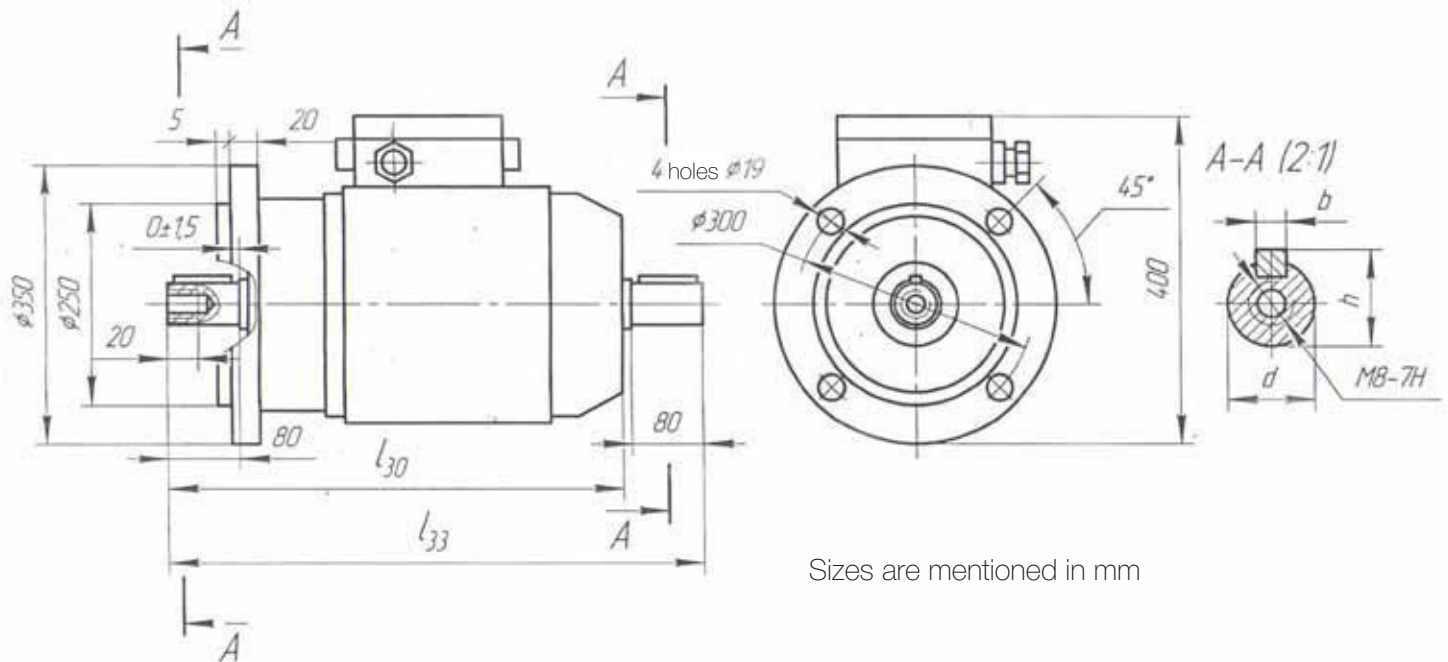


Elevator electric motor for gear winches of ADB160L6/18LBU3 type

- Mounting version: on feet with two free shaft ends
- Operating mode: repeatedly short-term S5 according to GOST 183
- Protection degree: IP10 by GOST 17494
- Cooling: convection (without fan on shaft)
- Class of insulation thermal-resistance: H
- Climatic version: Y2, Y3 by GOST 15150-69 (for macro-climatic region with temperate and cold climate, and humid tropical climate)
- Electric motor equipped with mounted thermal protection against winding overheating

The main technical characteristics

Name	Value
Rotation frequency, rpm	1000/333
Rated output on shaft of electric motor, kW	3.55/1.18
Current in case of 380V, A	12.8/13.9
Efficiency, %	70/40
Output coefficient, $\cos \varphi$	0.6/0.32
Average operational life till the capital repair, h	20 000
Warranty period, months	12



Dimension type of the motor	Mounting version	L ₃₀	L ₃₃	d	h	b		Weight, kg
						Rated	Extreme deviation	
ADB160L6/18LBU3	IM 3001	525	-	32	35	10	h9	113.5
				42	45	12		113.9
	IM 3002	-	615	32	35	10		114.1
				42	45	12		114.9

